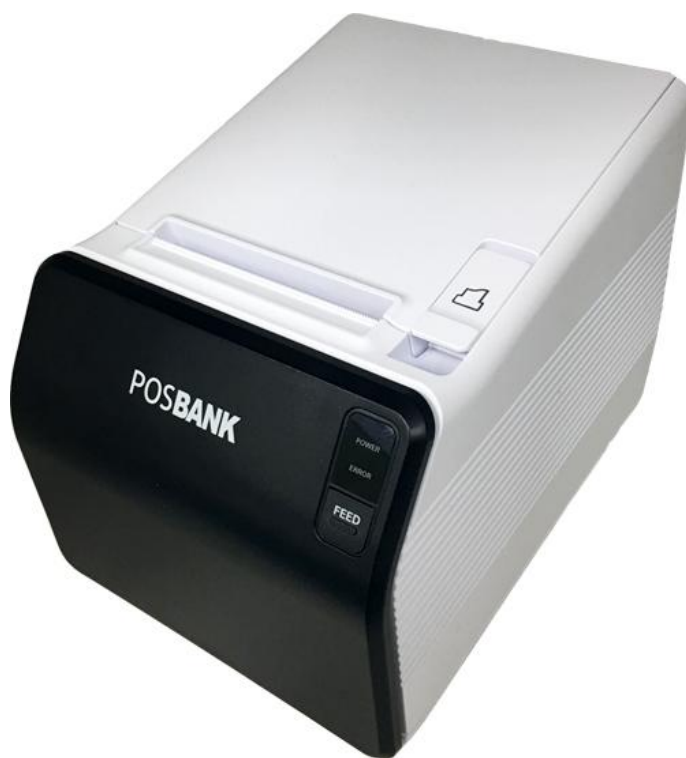


# POS Thermal Receipt Printer

## A11 Prime

---



## Bluetooth Manual (Windows/Android OS)

# Table of Contents

<b>1. Manual Information .....</b>	<b>3</b>
<b>2. Precautions .....</b>	<b>3</b>
<b>3. Normal(Windows/Android) Checking .....</b>	<b>3</b>
<b>4. General Sequence for Bluetooth Connections .....</b>	<b>4</b>
<b>5. Bluetooth Connection Instructions.....</b>	<b>5</b>
5-1 Connecting with Bluetooth Dongle (BlueSoleil IVT Stack) .....	5
5-2 Connecting with Android Mobile Phone .....	8

## 1. Manual Information

This Bluetooth Connection Manual provides information on the connection of Bluetooth-enabled devices (PDAs, PCs, etc.) with the printer.

We at POSBANK maintain ongoing efforts to enhance and upgrade the functions and quality of all our products. In following, product specifications and/or user manual content may be changed without prior notice.

## 2. Precautions

- 2-1** To connect the printer with another device via Bluetooth, the devices must be within 100m of one another. The connection is broken if the distance between devices exceeds 100m.
- 2-2** The maximum separating distance may be shortened if transmission obstacles, such as cement walls, are present.
- 2-3** If a device (such as a microwave oven, wireless LAN, etc.) that uses the same frequency is present, transmission may be interrupted. Separate the printer and Bluetooth-enabled device from such interrupting devices by a distance of at least 5m.

## 3. Normal(Windows/Android) Checking

- 1) Implement self-test
- 2) Normal mode is enabled if “OPERATING MODE” printed “Normal” at the paper.

BLUETOOTH SETTING BLUETOOTH F/W VER: x.x.xx SYSTEM NAME: BLUETOOTH PRINTER OPERATING MODE: NORMAL AUTH. & ENCRY: ENABLE CONNECTION MODE: 2
---

## 4. General Sequence for Bluetooth Connections

Bluetooth connection methods vary by device. The following is the general sequence for Bluetooth connections, provided for reference purposes.

(Please check to the Normal Mode setting Dip Switch if Dip Switch is off before turn on the Printer.)

**4-1** Turn on power of each device.

- PDAs, PCs (Bluetooth Dongle), Printers, etc.

**4-2** Run a Bluetooth connection program on the PDA or PC.

**4-3** Search for the peripheral with which to establish the connection.

- Search for the printer.

**4-4** Register this Printer form the search results.

- If a security setting is enabled, register after entering the PIN Code.  
(PIN Code = Pass Key: password of the Bluetooth device, Default code: 0000)

**4-5** Test the connection.

- When connected, confirm the designated COM port of fixed COM port and print.

## 5. Bluetooth Connection Instructions

Please use this manual as a guide when using devices other than those listed here.

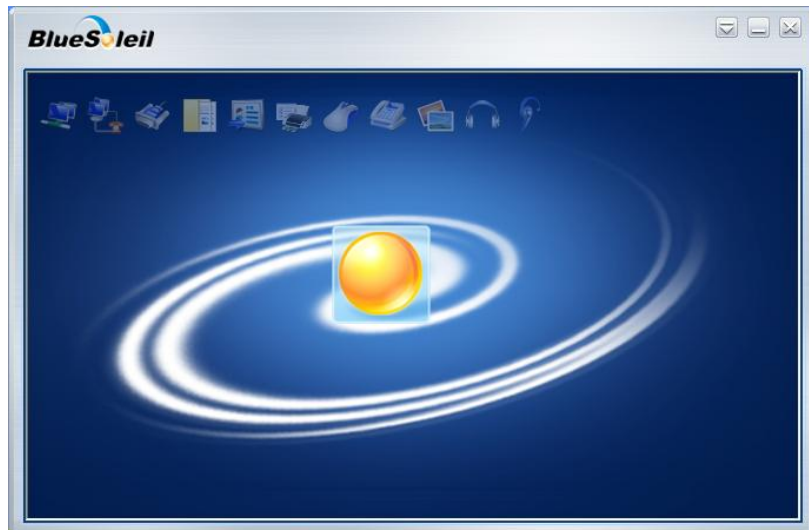
- Bluetooth Dongle (BlueSoleil IVT Stack)
- SHV-E330S(Android Mobile Phone)

After turning on the power of all Bluetooth devices, perform the connection process.

- PC(Bluetooth Dongle), Mobile Phone, Printers, etc.

### 5-1 Connecting with Bluetooth Dongle (BlueSoleil IVT Stack)

- 1) After purchasing Bluetooth Dongle, insert the CD in the PC and install BlueSoleil.
- 2) Connect Bluetooth Dongle to the USB port of the PC.
- 3) Click the BlueSoleil icon on the PC screen top.
- 4) Click the red sphere at the center of the BlueSoleil main screen.



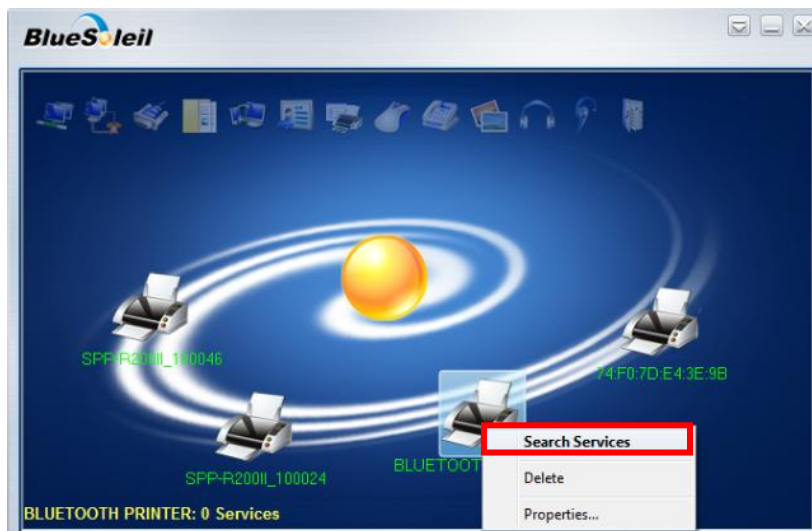
- 5) If you attempt searching for Bluetooth devices, the device's MAC address is displayed.



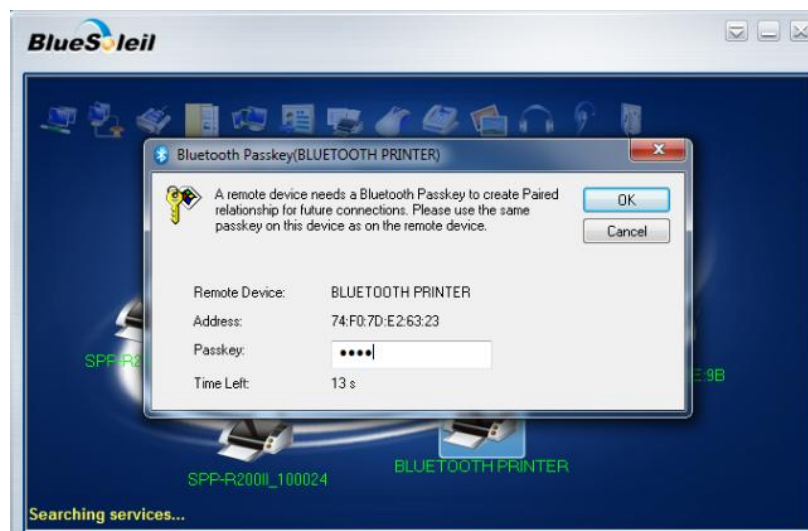
After a while, Mac address is automatically changed the device name.



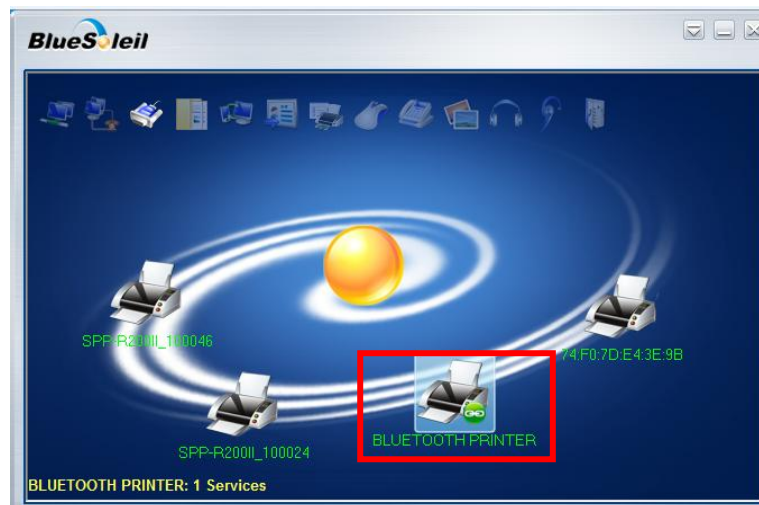
6) Click right button of the mouse above the “Printer Icon” and select the “Search Services”.



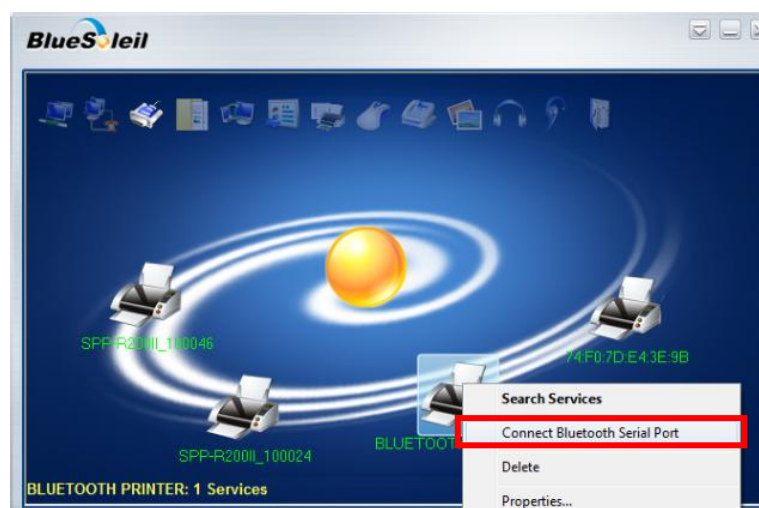
7) Enter the PIN Code in the Bluetooth Pass Key window. (Default Pass Key: 0000)



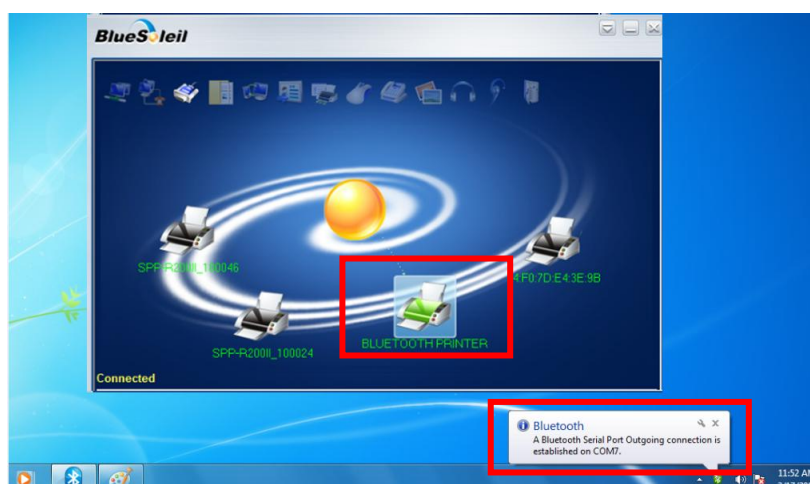
- 8) If the Pass Key (PIN Code) is correct and pairing is completed, a green check symbol appears next to the printer icon.



- 9) Click right button of the mouse above the “printer icon” and select “Connect Bluetooth Serial Port Service”.

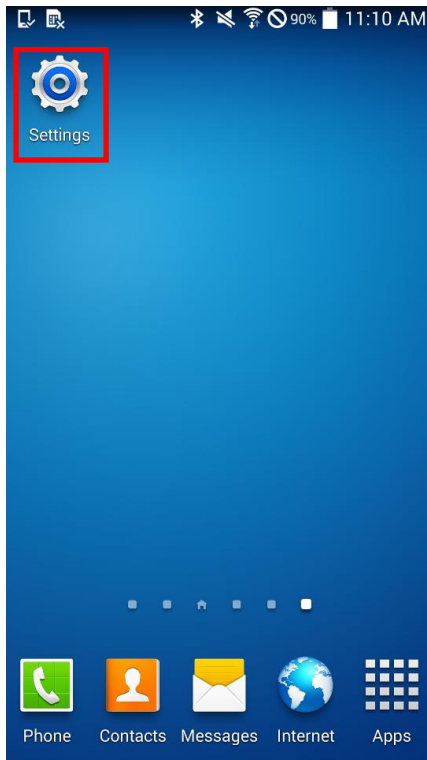


- 10) When the connection is established, the icon turns green and a dotted line appears as shown in the image below and then the message pictured below appears at the bottom right of the PC screen.



## 5-2 Connecting with Android Mobile Phone

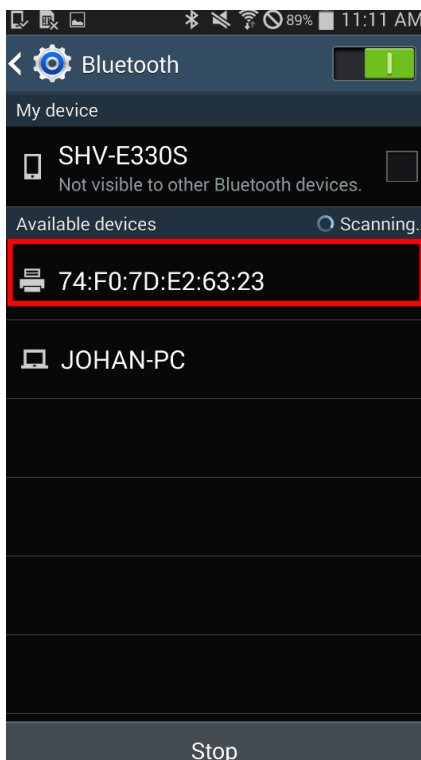
1) Select the  (settings) icon.



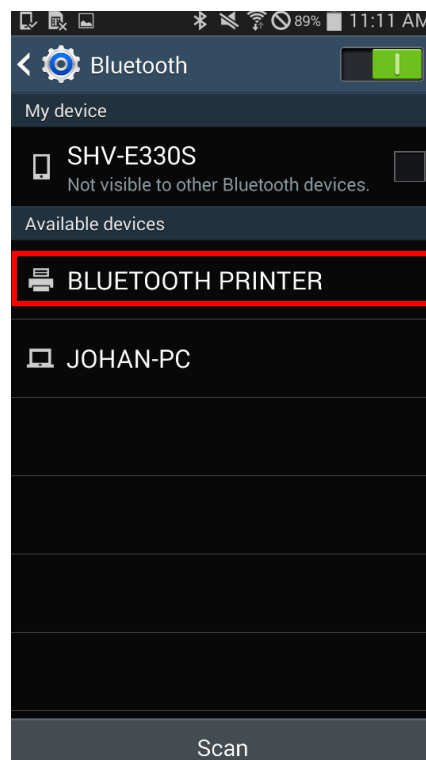
2) Select Bluetooth



3) If device's MAC address is displayed, wait for a few seconds.



4) Mac address is automatically changed the device name.  
Select the printer to Bluetooth connection.



5) Enter the PIN Code in the Bluetooth Pass Key window. (Default Pass Key: 0000)



6) If pairing step finished Bluetooth communication is available.

